



A SUPERB CONVERSION OF THE FORMER PHEASANT PUBLIC HOUSE

THE PHEASANT, PHEASANT CLOSE,
PLANTATION ROAD, AMERSHAM,
BUCKINGHAMSHIRE, HP6 6HL

Freehold

Entrance hall ♦ cloakroom ♦ dining area ♦ lounge
♦ kitchen/breakfast room ♦ 4 bedrooms ♦ en suite shower
room ♦ family bathroom ♦ 3 parking spaces ♦ garden

The Pheasant is a Grade II listed former public house which has undergone a comprehensive programme of renovation to convert a significant part into a stunning family home combining character with contemporary living. The entrance hall opens onto a dining/study area with feature fireplace with two staircases rising to the first floor. Double doors open into the double aspect lounge with its pretty bay window. At the rear with two sets of french doors opening onto the garden is the family sized kitchen/breakfast room superbly fitted with an extensive range of contemporary units with granite worktops incorporating two single ovens, steam oven, microwave and a wine cooler. The beamed master bedroom suite is accessed via one of the staircases with the other providing access to the three other bedrooms and well appointed family bathroom with Porcelanosa tiling.

The walled rear garden has paved patio areas for al fresco entertaining and areas of lawn.

The conversion from the original public house has been carried out by Inland Homes and is the centre piece of a small new development in an exclusive private close being built by Troy Homes, within half a mile of Amersham on the Hill centre with its multiple shopping facilities and amenities together with the Metropolitan/Chiltern Line station for the London commuter.

Note: Computer generated images are shown. Please contact us before viewing if you have any queries.

Savills Amersham
55 Hill Avenue, Amersham,
HP6 5BX
amersham@savills.com
01494 725636

savills.co.uk

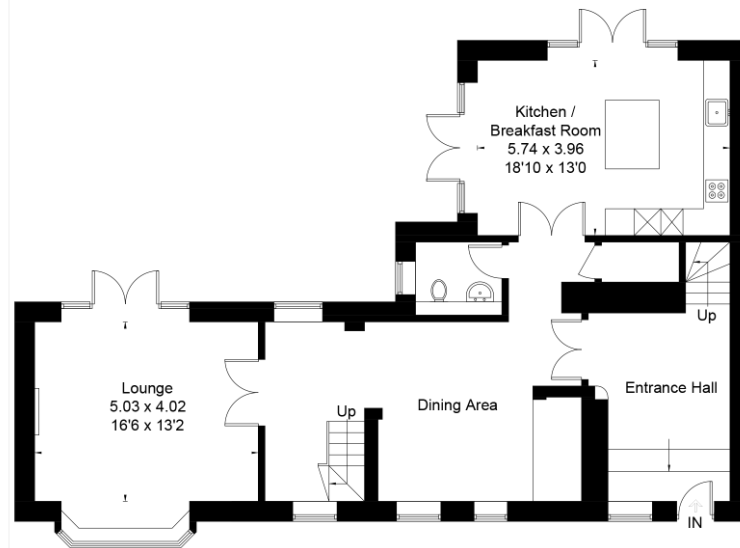


The Pheasant Plantation Road, Amersham, HP6 6HL

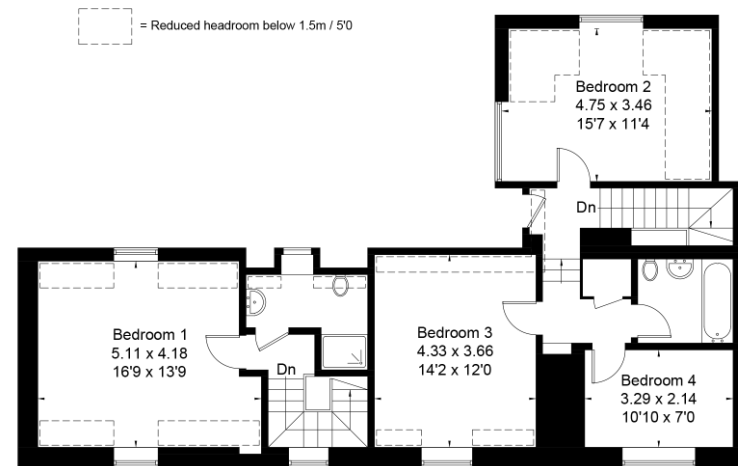
Gross Internal Area (approx) = 194.4 sq m / 2092 sq ft

For identification only. Not to scale.

© Floorplanz Ltd



Ground Floor



First Floor