



# MERIDIAN WATERSIDE

SOUTHAMPTON

## GRANADA HOUSE

Initial Release  
Apartment Layouts



Inland  
homes

# GRANADA HOUSE

## One bedroom apartment



MERIDIAN  
WATERSIDE

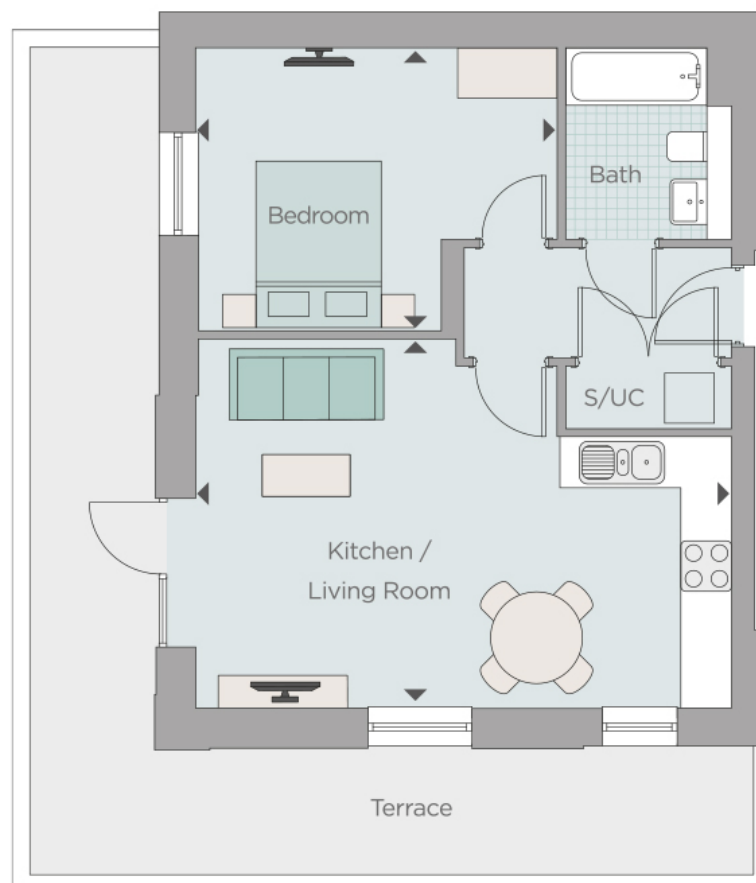
SOUTHAMPTON

### Plot 160

51.3m<sup>2</sup> / 551 ft<sup>2</sup>

Kitchen / Living Room  
6.46m x 4.44m  
21'2" x 14'6"

Bedroom  
4.36m x 3.40m  
14'3" x 11'1"



S/UC = denotes services and utility cupboard

All room dimensions are subject to a +/- 50mm (2") tolerance and may vary from plot to plot. Kitchen and bathroom layouts are indicative only. Please consult the Sales Advisor for specific elevations, room dimensions and internal layouts. This information is for guidance only and does not form any part of any contract or constitute a warranty.

# GRANADA HOUSE

## One bedroom apartment



MERIDIAN  
WATERSIDE

SOUTHAMPTON

### Plot 161

48.6m<sup>2</sup> / 523 ft<sup>2</sup>

#### Kitchen / Living Room

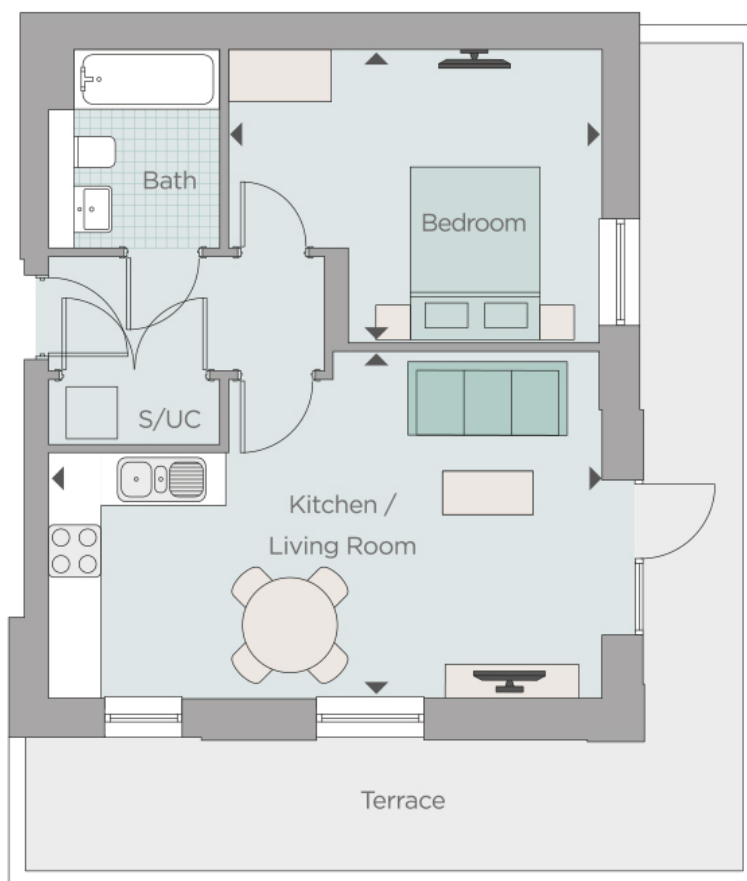
6.46m x 4.03m

21'2" x 13'2"

#### Bedroom

4.36m x 3.40m

14'3" x 11'1"



S/UC = denotes services and utility cupboard

All room dimensions are subject to a +/- 50mm (2") tolerance and may vary from plot to plot. Kitchen and bathroom layouts are indicative only. Please consult the Sales Advisor for specific elevations, room dimensions and internal layouts. This information is for guidance only and does not form any part of any contract or constitute a warranty.

# GRANADA HOUSE

## One bedroom apartment



MERIDIAN  
WATERSIDE

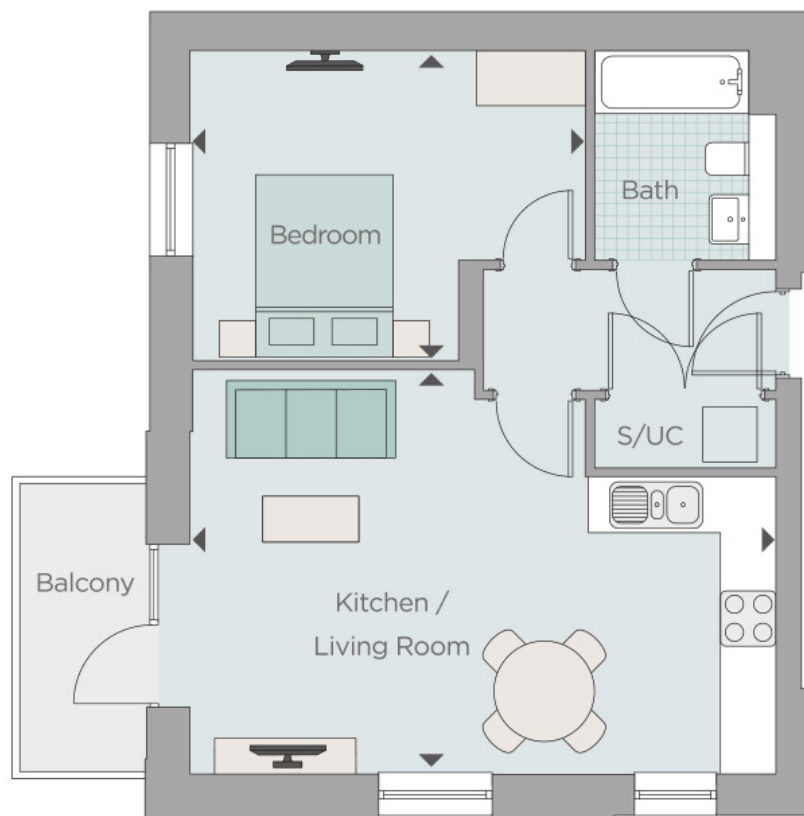
SOUTHAMPTON

Plots 171, 184, 194 & 210

51.3m<sup>2</sup> / 551 ft<sup>2</sup>

Kitchen / Living Room  
6.46m x 4.44m  
21'2" x 14'6"

Bedroom  
4.36m x 3.40m  
14'3" x 11'1"



S/UC = denotes services and utility cupboard

All room dimensions are subject to a +/- 50mm (2") tolerance and may vary from plot to plot. Kitchen and bathroom layouts are indicative only. Please consult the Sales Advisor for specific elevations, room dimensions and internal layouts. This information is for guidance only and does not form any part of any contract or constitute a warranty.

# GRANADA HOUSE

## Two bedroom apartment



MERIDIAN  
WATERSIDE

SOUTHAMPTON

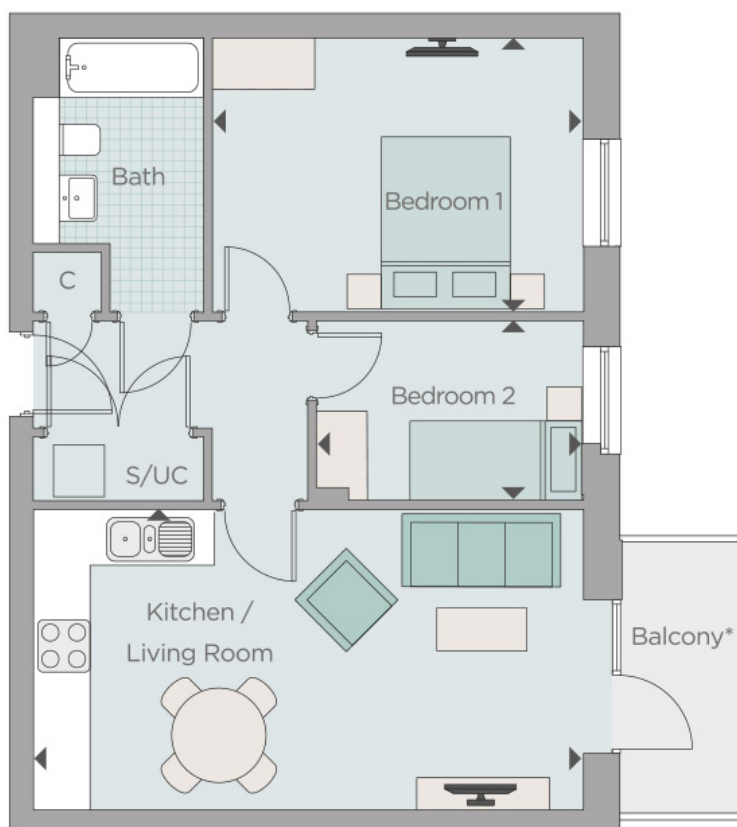
Plots 168, 181, 194, 207 & 220 shown  
Plots 173, 186, 199, 212 & 224 mirrored

58.1m<sup>2</sup> / 625 ft<sup>2</sup>

Kitchen / Living Room  
6.46m x 3.51m  
21'2" x 11'6"

Bedroom 1  
4.36m x 3.20m  
10'3" x 6'10"

Bedroom 2  
3.14m x 2.10m  
10'3" x 6'10"



\*Terrace to Plot 168, refer to Sales Advisor for details

S/UC = denotes services and utility cupboard

All room dimensions are subject to a +/- 50mm (2") tolerance and may vary from plot to plot. Kitchen and bathroom layouts are indicative only. Please consult the Sales Advisor for specific elevations, room dimensions and internal layouts. This information is for guidance only and does not form any part of any contract or constitute a warranty.

# GRANADA HOUSE

## Two bedroom apartment



MERIDIAN  
WATERSIDE

SOUTHAMPTON

Plots 169, 182, 195, 208 & 221

60.4m<sup>2</sup> / 650 ft<sup>2</sup>

Kitchen / Living Room

6.46m x 4.63m

21'2" x 15'2"

Bedroom 1

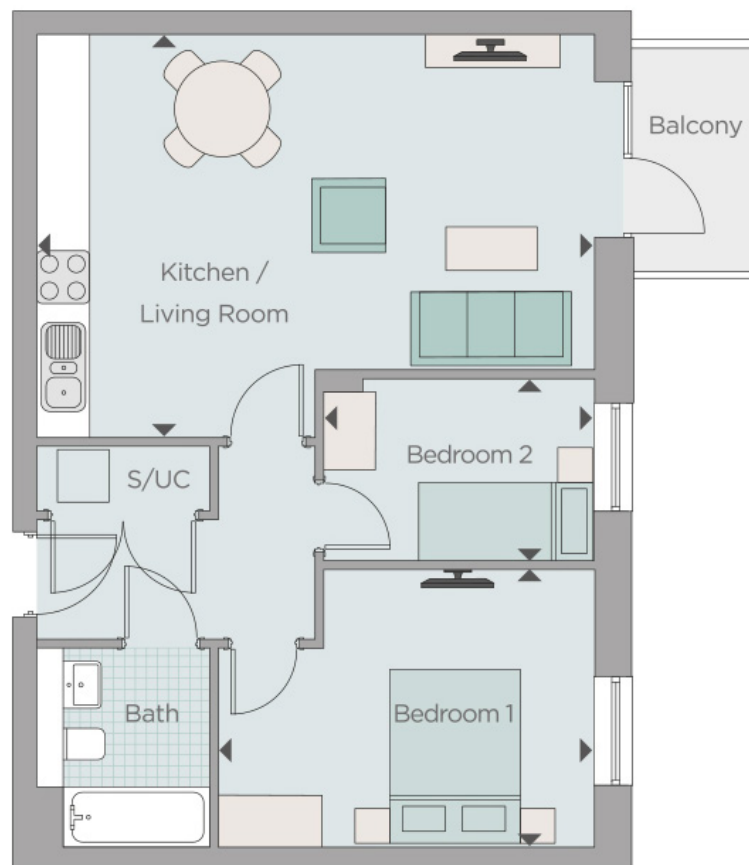
4.36m x 3.20m

14'3" x 10'6"

Bedroom 2

3.14m x 2.10m

10'3" x 6'10"



S/UC = denotes services and utility cupboard

All room dimensions are subject to a +/- 50mm (2") tolerance and may vary from plot to plot. Kitchen and bathroom layouts are indicative only. Please consult the Sales Advisor for specific elevations, room dimensions and internal layouts. This information is for guidance only and does not form any part of any contract or constitute a warranty.

# GRANADA HOUSE

## Two bedroom apartment



MERIDIAN  
WATERSIDE

SOUTHAMPTON

Plots 170, 183, 196 & 209

64.3m<sup>2</sup> / 692 ft<sup>2</sup>

Kitchen / Living Room

6.46m x 3.47m

21'2" x 11'4"

Bedroom 1

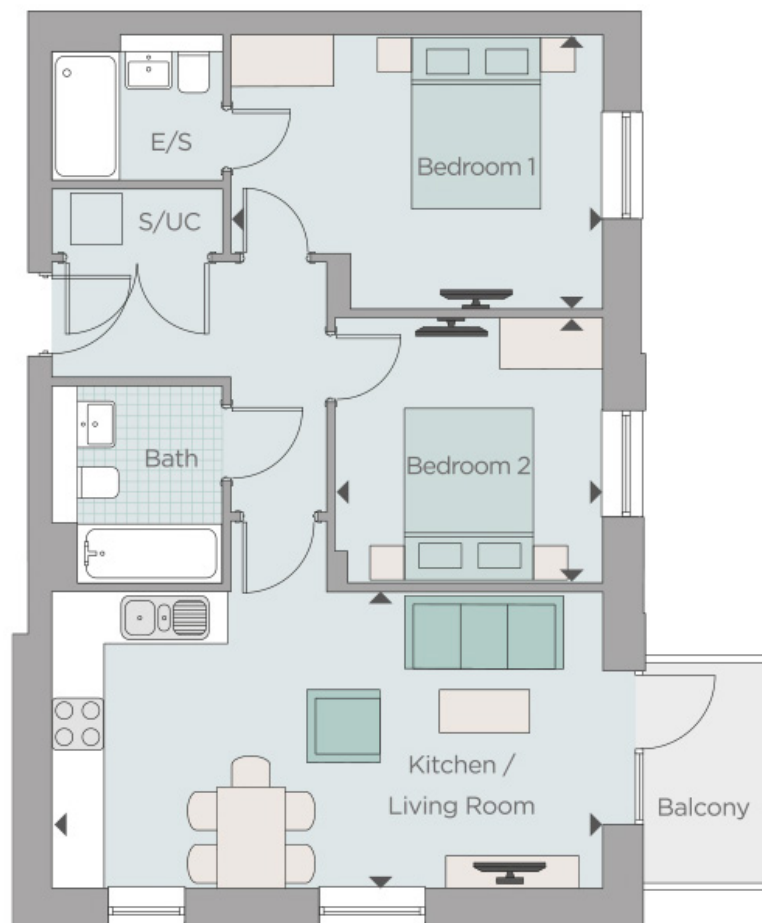
4.36m x 3.20m

14'3" x 10'6"

Bedroom 2

3.14m x 3.10m

10'3" x 10'2"



S/UC = denotes services and utility cupboard

All room dimensions are subject to a +/- 50mm (2") tolerance and may vary from plot to plot. Kitchen and bathroom layouts are indicative only. Please consult the Sales Advisor for specific elevations, room dimensions and internal layouts. This information is for guidance only and does not form any part of any contract or constitute a warranty.

# GRANADA HOUSE

## One bedroom apartment



MERIDIAN  
WATERSIDE

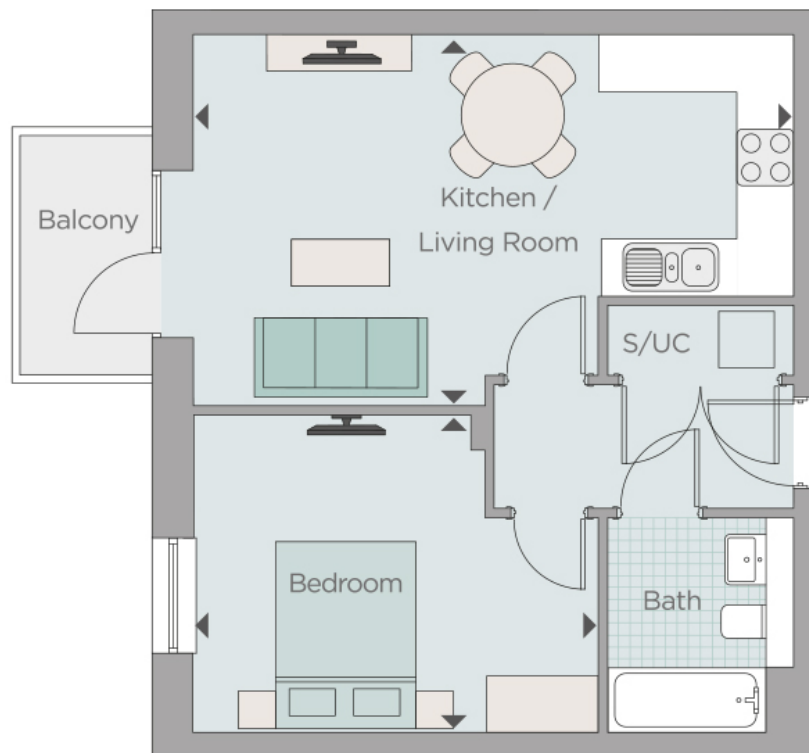
SOUTHAMPTON

Plots 172, 185, 198, 211 & 223

48.2m<sup>2</sup> / 519 ft<sup>2</sup>

Kitchen / Living Room  
6.46m x 3.97m  
21'2" x 13'0"

Bedroom  
4.36m x 3.40m  
14'3" x 11'1"



S/UC = denotes services and utility cupboard

All room dimensions are subject to a +/- 50mm (2") tolerance and may vary from plot to plot. Kitchen and bathroom layouts are indicative only. Please consult the Sales Advisor for specific elevations, room dimensions and internal layouts. This information is for guidance only and does not form any part of any contract or constitute a warranty.



# GRANADA HOUSE

## Three bedroom apartment



MERIDIAN  
WATERSIDE

SOUTHAMPTON

### Plot 222

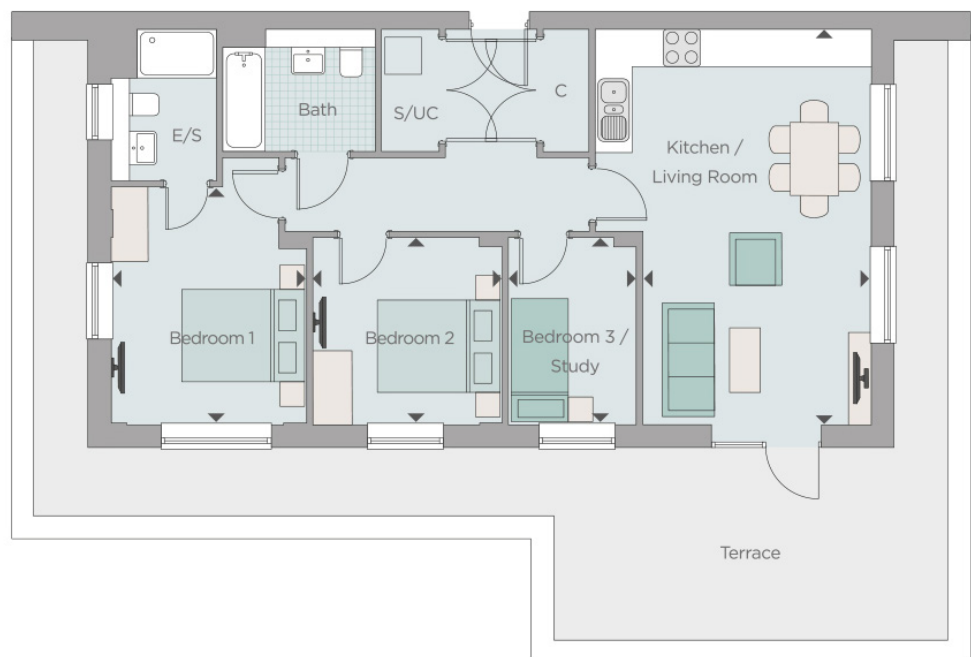
80.2m<sup>2</sup> / 863 ft<sup>2</sup>

Kitchen / Living Room  
6.45m x 3.74m  
21'1" x 12'3"

Bedroom 1  
4.35m x 3.20m  
14'3" x 10'6"

Bedroom 2  
3.10m x 3.05m  
10'2" x 10'0"

Bedroom 3  
3.05m x 2.10m  
10'0" x 6'10"



S/UC = denotes services and utility cupboard

All room dimensions are subject to a +/- 50mm (2") tolerance and may vary from plot to plot. Kitchen and bathroom layouts are indicative only. Please consult the Sales Advisor for specific elevations, room dimensions and internal layouts. This information is for guidance only and does not form any part of any contract or constitute a warranty.